



STYLE
5000

WEAVING
EXCELLENCE
WITH
INNOVATION



Code	Color	SOLAR OPTICAL PROPERTIES				SHGC/G VALUE g-tot (glass & blind)	
		TS	RS	AS	TV	SINGLE 1/4 CL	INSULATING 1 HA
STYLE 5000							
P60	Bamboo/Birch	21	59	20	18	0.34	0.24
Q03	Feather/Beige	29	48	23	27	0.42	0.28
Q43	Marble/Sand	9	48	43	9	0.37	0.26
Q46	Bamboo/Wheat	19	29	52	16	0.50	0.32
Q50	Bark/Tiger Oak	17	24	59	16	0.52	0.33
Q61	Bark/Ash	8	29	63	11	0.48	0.31
Q62	Bark/Pewter	11	35	54	13	0.45	0.30
Q63	Linen/Pearl	36	50	14	33	0.42	0.28
Q64	Linen/Taupe	22	39	39	20	0.45	0.30
Q65	Linen/Clay	23	32	45	23	0.50	0.31
Q66	Metro/Platinum	29	31	40	28	0.51	0.32
Q94	Tweed/Oatmeal	11	34	55	10	0.46	0.30
Q95	Tweed/Buckeye	9	28	63	9	0.49	0.31
R04	Feather/Alabaster	10	69	21	8	0.26	0.21
R05	Feather/Clear	18	71	11	17	0.27	0.21
R06	Feather/Grey	8	65	26	6	0.28	0.22
R11	Linen/Cranberry	7	17	76	8	0.54	0.34
R12	Linen/Cinnamon	6	20	74	8	0.52	0.33
R85	Jute/Parchment	13	70	17	10	0.26	0.21
R86	Jute/Flax	30	56	14	27	0.37	0.26
R87	Jute/Latte	24	50	26	21	0.40	0.27
R88	Jute/Coffee	5	15	80	5	0.55	0.35
R89	Chenille/Marshmallow	16	67	17	15	0.29	0.22
R90	Chenille/Pearl	32	53	15	29	0.40	0.27
R91	Chenille/Honey	26	47	27	24	0.42	0.28
R92	Chenille/Driftwood	12	26	62	14	0.50	0.32
R95	Bark/Sienna	6	16	78	6	0.55	0.34
U10	Linen/Topaz	11	24	65	10	0.51	0.33
U11	Linen/Burlap	10	30	60	9	0.48	0.31
U12	Linen/Cream	22	46	31	21	0.42	0.28
U24	Seaglass/Silver	33	27	40	37	0.54	0.34
U28	Seaglass/Chardonnay	40	43	17	41	0.47	0.30
U29	Seaglass/Crystal	44	49	7	45	0.44	0.29
V17	Jute/Fog	9	58	34	6	0.32	0.24
V18	Jute/Smoke	17	49	34	15	0.39	0.27
V88	Linen/Fig	6	15	79	8	0.55	0.35

Original artwork and original designs are protected under U.S. copyright laws. The samples attached to this notice fall under the federal statute and are therefore protected. Slight changes in the color combinations or weave pattern do not remove your legal obligation. If you would like further information regarding the copyright status of a pattern, please call the market manager representative at 1-800-221-5497 and refer to the style number.

PROTECTION THAT LIVES ON
MICROBAN[®]
 Microban[®] antimicrobial protection inhibits the growth of stain-causing bacteria, mold and mildew on the shade.



PRODUCT CERTIFIED FOR
 LOW CHEMICAL EMISSIONS
 UL.COM/GG
 UL 2818



MIF Seal of Approval



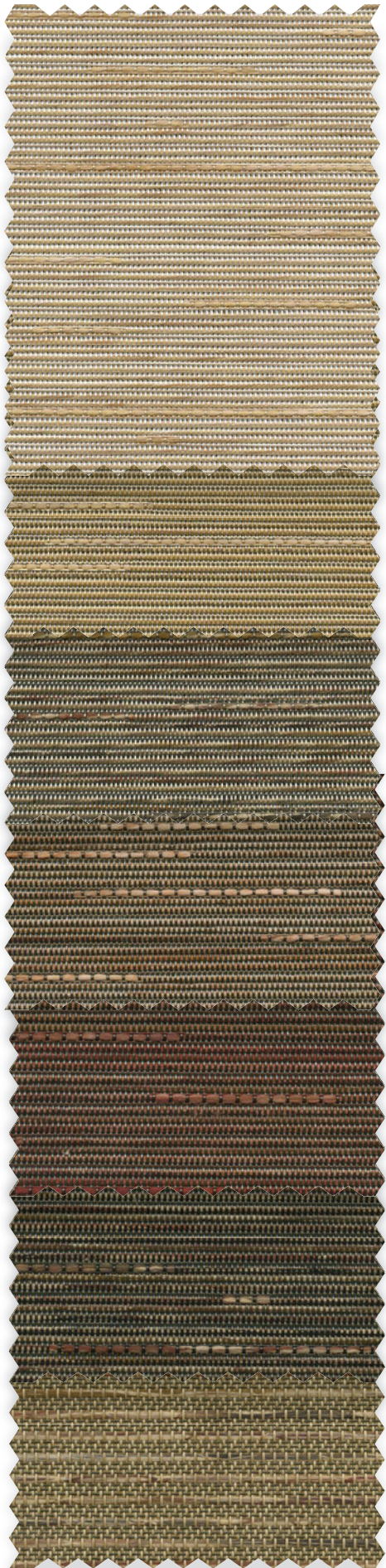
TS = Solar Transmittance
 RS = Solar Reflectance
 AS = Solar Absorptance
 TV = Visual Transmittance

SHGC = Solar Heat Gain Coefficient

1/4 CL = 1/4" Clear Glass
 1 HA = 1" Heat Absorbing Glass

Fabrics Installed Internally
 Zero-Degree Profile Angle

For additional performance values, test references and technical definitions visit us at www.phifer.com.



U12
Linen /
Cream

U11
Linen /
Burlap

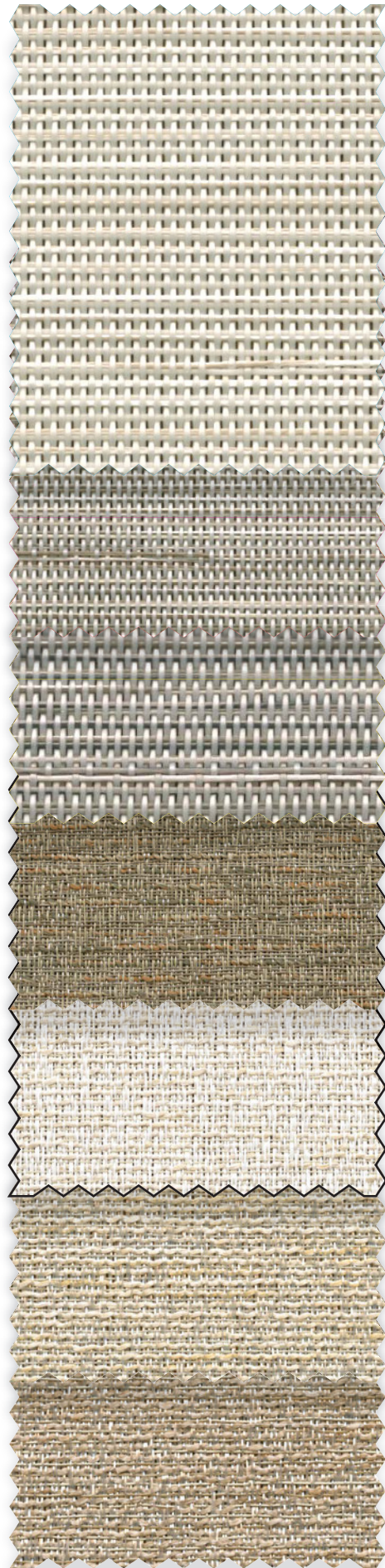
U10
Linen /
Topaz

R12
Linen /
Cinnamon

R11
Linen /
Cranberry

V88
Linen / Fig

Q95
Tweed /
Buckeye



Q63
Linen / Pearl

Q64
Linen / Taupe

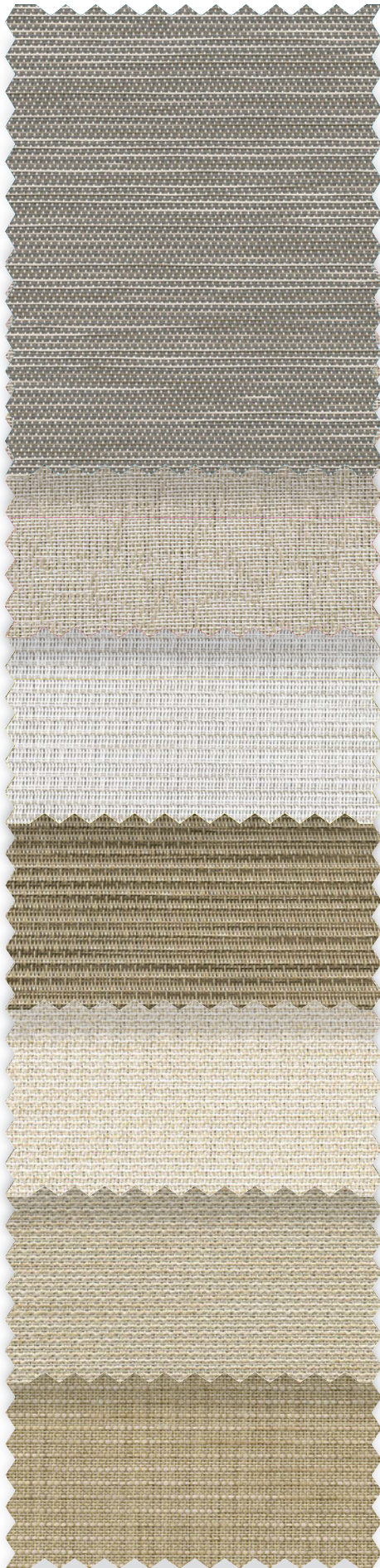
Q65
Linen / Clay

R92
Chenille /
Driftwood

R89
Chenille /
Marshmallow

R90
Chenille /
Pearl

R91
Chenille /
Honey



Q66
Metro /
Platinum

Q43
Marble / Sand

P60
Bamboo /
Birch

Q46
Bamboo /
Wheat

R85
Jute /
Parchment

R86
Jute /
Flax

Q94
Tweed /
Oatmeal



U29
Seaglass /
Crystal

U28
Seaglass /
Chardonnay

U24
Seaglass /
Silver

Q62
Bark / Pewter

Q61
Bark /
Ash

Q50
Bark /
Tiger Oak

R95
Bark /
Sienna



STYLE
5000

NEW

R05
Feather /
Clear

NEW

R04
Feather /
Alabaster

NEW

R06
Feather /
Grey

NEW

Q03
Feather /
Beige

NEW

V17
Jute / Fog

NEW

V18
Jute /
Smoke

R88
Jute / Coffee

R87
Jute / Latte

P60 Bamboo/Birch

COMPOSITION: 28% Polyester, 72% Vinyl on Polyester

MESH WEIGHT: 14.5 oz/yd²
(492 g/m²)

FABRIC THICKNESS: 0.038 in.
(0.97 mm)

OPENNESS FACTOR: Approx. 10%

UV BLOCKAGE: Approx. 90%

FIRE CLASSIFICATION: California U.S. Title 19 (small scale), NFPA 701 TM#1 (small scale), NFPA 701 TM#2 (large scale), California Technical Bulletin 117, BS 5867 Part 2 Type B Performance, NFPA 101 (Class A Rating) and IBC Section 803.1.1 (Class A Rating)

Q03 Feather/Beige

COMPOSITION: 28% Polyester, 72% Vinyl on Polyester

MESH WEIGHT: 15.8 oz/yd²
(536 g/m²)

FABRIC THICKNESS: 0.035 in.
(0.89 mm)

OPENNESS FACTOR: Approx. 3%

UV BLOCKAGE: Approx. 97%

FIRE CLASSIFICATION: California Technical Bulletin 117, NFPA 101 (Class A Rating) and IBC Section 803.1.1 (Class A Rating)

Q43 Marble/Sand

COMPOSITION: 28% Polyester, 72% Vinyl on Polyester

MESH WEIGHT: 14.5 oz/yd²
(492 g/m²)

FABRIC THICKNESS: 0.038 in.
(0.97 mm)

OPENNESS FACTOR: Approx. 5%

UV BLOCKAGE: Approx. 95%

FIRE CLASSIFICATION: California U.S. Title 19 (small scale), NFPA 701 TM#1 (small scale), NFPA 701 TM#2 (large scale), California Technical Bulletin 117, BS 5867 Part 2 Type B Performance, NFPA 101 (Class A Rating) and IBC Section 803.1.1 (Class A Rating)

Q46 Bamboo/Wheat

COMPOSITION: 27% Polyester, 68% Vinyl on Polyester, 5% Olefin

MESH WEIGHT: 14.3 oz/yd²
(485 g/m²)

FABRIC THICKNESS: 0.044 in.
(1.12 mm)

OPENNESS FACTOR: Approx. 7%

UV BLOCKAGE: Approx. 93%

FIRE CLASSIFICATION: California Technical Bulletin 117, NFPA 101 (Class A Rating) and IBC Section 803.1.1 (Class A Rating)

Q50 Bark/Tiger Oak

COMPOSITION: 27% Polyester, 68% Vinyl on Polyester, 5% Olefin

MESH WEIGHT: 14.3 oz/yd²
(485 g/m²)

FABRIC THICKNESS: 0.044 in.
(1.12 mm)

OPENNESS FACTOR: Approx. 5%

UV BLOCKAGE: Approx. 95%

FIRE CLASSIFICATION: California Technical Bulletin 117, NFPA 101 (Class A Rating) and IBC Section 803.1.1 (Class A Rating)

Q61 Bark/Ash

COMPOSITION: 72% Vinyl on

Polyester, 28% Polyester

MESH WEIGHT: 16.1 oz/yd²
(546 g/m²)

FABRIC THICKNESS: 0.043 in.
(1.09 mm)

OPENNESS FACTOR: Approx. 5%

UV BLOCKAGE: Approx. 95%

FIRE CLASSIFICATION: NFPA 701 TM#1 (small scale), California Technical Bulletin 117, NFPA 101 (Class A Rating) and IBC Section 803.1.1 (Class A Rating)

Q62 Bark/Pewter

COMPOSITION: 72% Vinyl on Polyester, 28% Polyester

MESH WEIGHT: 15.3 oz/yd² (519 g/m²)

FABRIC THICKNESS: 0.042 in.
(1.07 mm)

OPENNESS FACTOR: Approx. 5%

UV BLOCKAGE: Approx. 95%

FIRE CLASSIFICATION: NFPA 701 TM#1 (small scale), California Technical Bulletin 117, NFPA 101 (Class A Rating) and IBC Section 803.1.1 (Class A Rating)

Q63 Linen/Pearl

COMPOSITION: 72% Vinyl on Polyester, 28% Polyester

MESH WEIGHT: 15.4 oz/yd²
(522 g/m²)

FABRIC THICKNESS: 0.035 in.
(0.89 mm)

OPENNESS FACTOR: Approx. 5%

UV BLOCKAGE: Approx. 95%

FIRE CLASSIFICATION: NFPA 701 TM#1 (small scale), California Technical Bulletin 117, NFPA 101 (Class A Rating) and IBC Section 803.1.1 (Class A Rating)

Q64 Linen/Taupe

COMPOSITION: 72% Vinyl on Polyester, 28% Polyester

MESH WEIGHT: 16.3 oz/yd²
(553 g/m²)

FABRIC THICKNESS: 0.035 in.
(0.89 mm)

OPENNESS FACTOR: Approx. 5%

UV BLOCKAGE: Approx. 95%

FIRE CLASSIFICATION: NFPA 701 TM#1 (small scale), California Technical Bulletin 117, NFPA 101 (Class A Rating) and IBC Section 803.1.1 (Class A Rating)

Q65 Linen/Clay

COMPOSITION: 72% Vinyl on Polyester, 28% Polyester

MESH WEIGHT: 15.5 oz/yd² (526 g/m²)

FABRIC THICKNESS: 0.035 in.
(0.89 mm)

OPENNESS FACTOR: Approx. 7%

UV BLOCKAGE: Approx. 93%

FIRE CLASSIFICATION: NFPA 701 TM#1 (small scale), California Technical Bulletin 117, NFPA 101 (Class A Rating) and IBC Section 803.1.1 (Class A Rating)

Q66 Metro/Platinum

COMPOSITION: 67% Vinyl on Polyester, 26% Polyester, 7% Olefin

MESH WEIGHT: 12.5 oz/yd²
(424 g/m²)

FABRIC THICKNESS: 0.030 in.
(0.76 mm)

OPENNESS FACTOR: Approx. 5%

UV BLOCKAGE: Approx. 95%

FIRE CLASSIFICATION: California Technical Bulletin 117, NFPA 101 (Class A Rating) and IBC Section 803.1.1 (Class A Rating)

Q94 Tweed/Oatmeal

COMPOSITION: 36% Polyester, 64% Vinyl on Polyester

MESH WEIGHT: 13.7 oz/yd²
(465 g/m²)

FABRIC THICKNESS: 0.036 in.
(0.91 mm)

OPENNESS FACTOR: Approx. 5%

UV BLOCKAGE: Approx. 95%

FIRE CLASSIFICATION: California Technical Bulletin 117, NFPA 101 (Class A Rating) and IBC Section 803.1.1 (Class A Rating)

Q95 Tweed/Buckeye

COMPOSITION: 37% Polyester, 63% Vinyl on Polyester

MESH WEIGHT: 13.6 oz/yd²
(461 g/m²)

FABRIC THICKNESS: 0.038 in.
(0.97 mm)

OPENNESS FACTOR: Approx. 5%

UV BLOCKAGE: Approx. 95%

FIRE CLASSIFICATION: California Technical Bulletin 117, NFPA 101 (Class A Rating) and IBC Section 803.1.1 (Class A Rating)

R04 Feather/Alabaster

COMPOSITION: 28% Polyester, 72% Vinyl on Polyester

MESH WEIGHT: 16.5 oz/yd²
(559 g/m²)

FABRIC THICKNESS: 0.035 in.
(0.89 mm)

OPENNESS FACTOR: Approx. 3%

UV BLOCKAGE: Approx. 97%

FIRE CLASSIFICATION: California U.S.

Title 19 (small scale), NFPA 701 TM#1 (small scale), NFPA 701 TM#2 (large scale), California Technical Bulletin 117, BS 5867 Part 2 Type B Performance, NFPA 101 (Class A Rating) and IBC Section 803.1.1 (Class A Rating)

R05 Feather/Clear

COMPOSITION: 28% Polyester, 72% Vinyl on Polyester

MESH WEIGHT: 15.8 oz/yd²
(536 g/m²)

FABRIC THICKNESS: 0.035 in.
(0.89 mm)

OPENNESS FACTOR: Approx. 3%

UV BLOCKAGE: Approx. 97%

FIRE CLASSIFICATION: California U.S.

Title 19 (small scale), NFPA 701 TM#1 (small scale), NFPA 701 TM#2 (large scale), California Technical Bulletin 117, BS 5867 Part 2 Type B Performance, NFPA 101 (Class A Rating) and IBC Section 803.1.1 (Class A Rating)

R06 Feather/Grey

COMPOSITION: 28% Polyester, 72% Vinyl on Polyester

MESH WEIGHT: 15.8 oz/yd²
(536 g/m²)

FABRIC THICKNESS: 0.034 in.
(0.86 mm)

OPENNESS FACTOR: Approx. 3%

UV BLOCKAGE: Approx. 97%

FIRE CLASSIFICATION: California U.S.

Title 19 (small scale), NFPA 701 TM#1 (small

scale), NFPA 701 TM#2 (large scale), California Technical Bulletin 117, BS 5867 Part 2 Type B Performance, NFPA 101 (Class A Rating) and IBC Section 803.1.1 (Class A Rating)

R11 Linen/Cranberry R12 Linen/Cinnamon

COMPOSITION: 45% Polyester, 55% Vinyl on Polyester

MESH WEIGHT: 14.1 oz/yd²
(478 g/m²)

FABRIC THICKNESS: 0.040 in.
(1.02 mm)

OPENNESS FACTOR: Approx. 3%

UV BLOCKAGE: Approx. 97%

FIRE CLASSIFICATION: California Technical Bulletin 117, NFPA 101 (Class A Rating) and IBC Section 803.1.1 (Class A Rating)

R85 Jute/Parchment

COMPOSITION: 49% Polyester, 51% Vinyl on Polyester

MESH WEIGHT: 17.2 oz/yd²
(584 g/m²)

FABRIC THICKNESS: 0.040 in.
(1.02 mm)

OPENNESS FACTOR: Approx. 1%

UV BLOCKAGE: Approx. 99%

FIRE CLASSIFICATION: California Technical Bulletin 117, NFPA 101 (Class A Rating) and IBC Section 803.1.1 (Class A Rating)

R86 Jute/Flax

COMPOSITION: 49% Polyester, 51% Vinyl on Polyester

MESH WEIGHT: 16.70 oz/yd²
(566 g/m²)

FABRIC THICKNESS: 0.039 in.
(0.99 mm)

OPENNESS FACTOR: Approx. 1%

UV BLOCKAGE: Approx. 99%

FIRE CLASSIFICATION: California Technical Bulletin 117, NFPA 101 (Class A Rating) and IBC Section 803.1.1 (Class A Rating)

R87 Jute/Latte

COMPOSITION: 49% Polyester, 51% Vinyl on Polyester

MESH WEIGHT: 16.62 oz/yd²
(564 g/m²)

FABRIC THICKNESS: .039 in.
(0.99 mm)

OPENNESS FACTOR: Approx. 1%

UV BLOCKAGE: Approx. 99%

FIRE CLASSIFICATION: California Technical Bulletin 117, NFPA 101 (Class A Rating) and IBC Section 803.1.1 (Class A Rating)

R88 Jute/Coffee

COMPOSITION: 49% Polyester, 51% Vinyl on Polyester

MESH WEIGHT: 16.88 oz/yd²
(572 g/m²)

FABRIC THICKNESS: 0.039 in.
(0.99 mm)

OPENNESS FACTOR: Approx. 1%

UV BLOCKAGE: Approx. 99%

FIRE CLASSIFICATION: California Technical Bulletin 117, NFPA 101 (Class A Rating) and IBC Section 803.1.1 (Class A Rating)

R89 Chenille/Marshmallow

COMPOSITION: 49% Polyester, 51% Vinyl on Polyester

MESH WEIGHT: 16.43 oz/yd²
(557 g/m²)

FABRIC THICKNESS: 0.048 in.
(1.22 mm)

OPENNESS FACTOR: Approx. 3%

UV BLOCKAGE: Approx. 97%

FIRE CLASSIFICATION: NFPA 701 TM#1 (small scale), California Technical Bulletin 117, NFPA 101 (Class A Rating) and IBC Section 803.1.1 (Class A Rating)

R90 Chenille/Pearl

COMPOSITION: 49% Polyester, 51% Vinyl on Polyester

MESH WEIGHT: 15.6 oz/yd²
(529 g/m²)

FABRIC THICKNESS: 0.044 in.
(1.12 mm)

OPENNESS FACTOR: Approx. 3%

UV BLOCKAGE: Approx. 97%

FIRE CLASSIFICATION: NFPA 701 TM#1 (small scale), California Technical Bulletin 117, NFPA 101 (Class A Rating) and IBC Section 803.1.1 (Class A Rating)

R91 Chenille/Honey

COMPOSITION: 49% Polyester, 51% Vinyl on Polyester

MESH WEIGHT: 16.34 oz/yd²
(554 g/m²)

FABRIC THICKNESS: 0.045 in.
(1.14 mm)

OPENNESS FACTOR: Approx. 3%

UV BLOCKAGE: Approx. 97%

FIRE CLASSIFICATION: California Technical Bulletin 117, NFPA 101 (Class A Rating) and IBC Section 803.1.1 (Class A Rating)

R92 Chenille/Driftwood

COMPOSITION: 20% Polyester, 71% PVC, 9% Olefin

MESH WEIGHT: 15.0 oz/yd²
(509 g/m²)

FABRIC THICKNESS: 0.047 in.
(1.19 mm)

OPENNESS FACTOR: Approx. 5%

UV BLOCKAGE: Approx. 95%

FIRE CLASSIFICATION: California Technical Bulletin 117, NFPA 101 (Class A Rating) and IBC Section 803.1.1 (Class A Rating)

R95 Bark/Sienna

COMPOSITION: 43% Polyester, 57% Vinyl on Polyester

MESH WEIGHT: 16.26 oz/yd²
(551 g/m²)

FABRIC THICKNESS: 0.054 in.
(1.37 mm)

OPENNESS FACTOR: Approx. 3%

UV BLOCKAGE: Approx. 97%

FIRE CLASSIFICATION: California Technical Bulletin 117, NFPA 101 (Class A Rating) and IBC Section 803.1.1 (Class A Rating)

U10 Linen/Topaz

V88 Linen/Fig

COMPOSITION: 45% Polyester, 55% Vinyl on Polyester

MESH WEIGHT: 14.1 oz/yd²
(478 g/m²)

FABRIC THICKNESS: 0.040 in.

(1.02 mm)

OPENNESS FACTOR: Approx. 3%

UV BLOCKAGE: Approx. 97%

FIRE CLASSIFICATION: California Technical Bulletin 117, NFPA 101 (Class A Rating) and IBC Section 803.1.1 (Class A Rating)

U11 Linen/Burlap

COMPOSITION: 43% Polyester, 57% Vinyl on Polyester

MESH WEIGHT: 16.1 oz/yd²
(546 g/m²)

FABRIC THICKNESS: 0.046 in.
(1.17 mm)

OPENNESS FACTOR: Approx. 3%

UV BLOCKAGE: Approx. 97%

FIRE CLASSIFICATION: California Technical Bulletin 117, NFPA 101 (Class A Rating) and IBC Section 803.1.1 (Class A Rating)

U12 Linen/Cream

COMPOSITION: 43% Polyester, 57% Vinyl on Polyester

MESH WEIGHT: 16.1 oz/yd²
(546 g/m²)

FABRIC THICKNESS: 0.052 in.
(1.32 mm)

OPENNESS FACTOR: Approx. 3%

UV BLOCKAGE: Approx. 97%

FIRE CLASSIFICATION: California Technical Bulletin 117, NFPA 101 (Class A Rating) and IBC Section 803.1.1 (Class A Rating)

U24 Seaglass/Silver

U28 Seaglass/Chardonnay

U29 Seaglass/Crystal

COMPOSITION: 28% Polyester, 72% Vinyl on Polyester

MESH WEIGHT: 14.3 oz/yd²
(485 g/m²)

FABRIC THICKNESS: 0.039 in.
(0.99 mm)

OPENNESS FACTOR: Approx. 10%

UV BLOCKAGE: Approx. 90%

FIRE CLASSIFICATION: NFPA 701 TM#1 (small scale), California Technical Bulletin 117, NFPA 101 (Class A Rating) and IBC Section 803.1.1 (Class A Rating)

V17 Jute/Fog

COMPOSITION: 40% Polyester, 60% Vinyl on Polyester

MESH WEIGHT: 17.2 oz/yd²
(583 g/m²)

FABRIC THICKNESS: 0.041 in.
(1.04 mm)

OPENNESS FACTOR: Approx. 3%

UV BLOCKAGE: Approx. 97%

FIRE CLASSIFICATION: NFPA 701 TM#1 (small scale), California Technical Bulletin 117, NFPA 101 (Class A Rating) and IBC Section 803.1.1 (Class A Rating)

V18 Jute/Smoke

COMPOSITION: 40% Polyester, 60% Vinyl on Polyester

MESH WEIGHT: 17.3 oz/yd²
(587 g/m²)

FABRIC THICKNESS: 0.042 in.
(1.07 mm)

OPENNESS FACTOR: Approx. 3%

UV BLOCKAGE: Approx. 97%

FIRE CLASSIFICATION: California Technical Bulletin 117, NFPA 101 (Class A Rating) and IBC Section 803.1.1 (Class A Rating)

STYLE 5000 SPECIFICATIONS

SheerWeave Style 5000 features fabrics that combine textured yarns with traditional patterns. With a color palette of hushed naturals and rich earth tones, this collection offers a range of classic options designed to suit any style of decor or personal preference. Style 5000 can also be used in exterior roller shades.

FIRE CLASSIFICATION	See individual pattern certifications <i>Fire classifications are subject to change. Please go to phifer.com for the most current information.</i>
BACTERIA AND FUNGAL RESISTANCE	ASTM E 2180 ASTM G21 ASTM G22 Includes Microban antimicrobial additives
ENVIRONMENTAL CERTIFICATION	GREENGUARD GREENGUARD Gold Certified to these standards for low chemical emissions into indoor air during product usage
SAFE USE	RoHS/Directive 2002/95/EC REACH (EC 1907/2006) compliant ANSI/WCMA A 100.1-2007 for lead content US Consumer Product Safety Commission Section 101
WARRANTY	10-year interior 5-year exterior
ACOUSTICAL PERFORMANCE	NRC (Noise Reduction Coefficient) and SAA (Sound Absorption Average) tested in accordance with ASTM C423-09a
UV PROTECTION	Seal of Approval by the Melanoma International Foundation (MIF) for effectiveness in preventing sun damage to the skin or eyes

STYLE 5000

WIDTHS	74" and 98" 187.96 cm and 248.9 cm
ROLL LENGTH	30 Linear Yards 27.4 Linear Meters
ACOUSTICAL VALUE	NRC .15 / SAA .16

For additional specification information, please see individual pattern listings.

PHIFER
INCORPORATED

P. O. Box 1700 • Tuscaloosa, Alabama 35403-1700 USA
Phone: 205.345.2120 • FAX: 205.391.0799
Toll Free USA/Canada: 1.800.221.5497
phifer.com • ISO Registered



© SheerWeave is a registered trademark of PHIFER INCORPORATED.
© MICROBAN is a registered trademark of Microban Products Company.
™ UL, the UL logos and the UL mark are trademarks of UL LLC.
Cover photo courtesy of WINDOW INTERIORS, Altamonte Springs, Florida, USA.
© PHIFER INCORPORATED V19B 110719 3033841